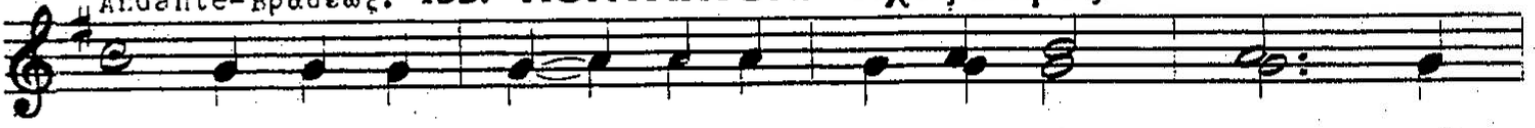
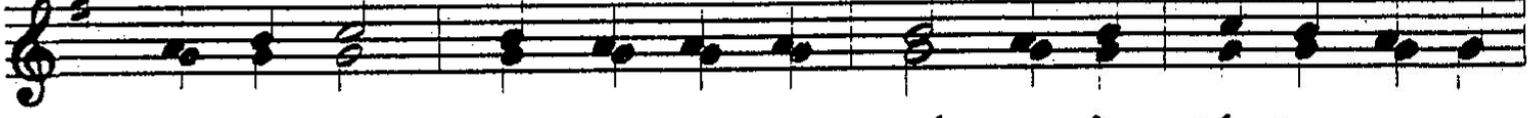


Ardante=Βραδέως. 153. KONTAKION. ᾠδὴ Βαρύς.



153 Ἐ - πὶ τοῦ ὁ - ρους με - τε - μορ - φώ - θης, καὶ
 E - pi tou o - rous me - te - mor - fo - this, ke



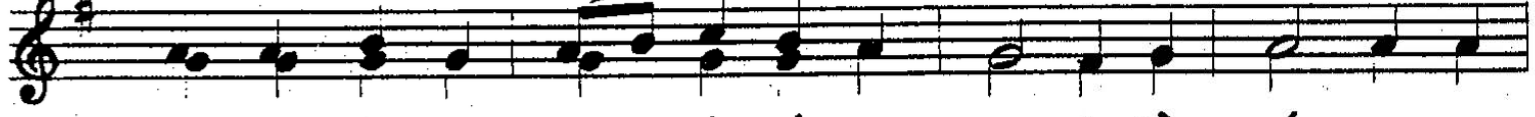
ὡς ἐ - χώ - ρουν οἱ μα - θη - ταί σου τὴν δό - ξαν σου Χρι -
 os e - ho - roun i ma - thi - te Sou tin tho - xan Sou Hri -



στὲ ὁ θε - ὅς - ἐ - θε - ἄ - σαν - το. ἰ - να
 ste o The - os - e - the - a - san - to. i - na



δ - ταν Σε ἰ - δω - σι σταυ - ρού - με - νον, τὸ μὲν πά -
 o - tan Se i - tho - si stav - rou - me - non, to men pa -



θος νο - ῆ - σω - σιν ἐ - κού - σι - ον, τῷ δὲ κό - σμῳ κη -
 thos no - i - so - sin e - kou - si - on, to the ko - smo ki -



ρύ - ξω - σιν, ὅ - τι Σὺ ὑ - πάρ - χεις ἀ - λη - θῶς
 ri - xo - sin, o - ti Si i - par - his a - li - thos



τοῦ Πα - τρός - τὸ ἀ - παύ - γα - σμα -
 tou Pa - tros - to a - pan - ya - sma -

